



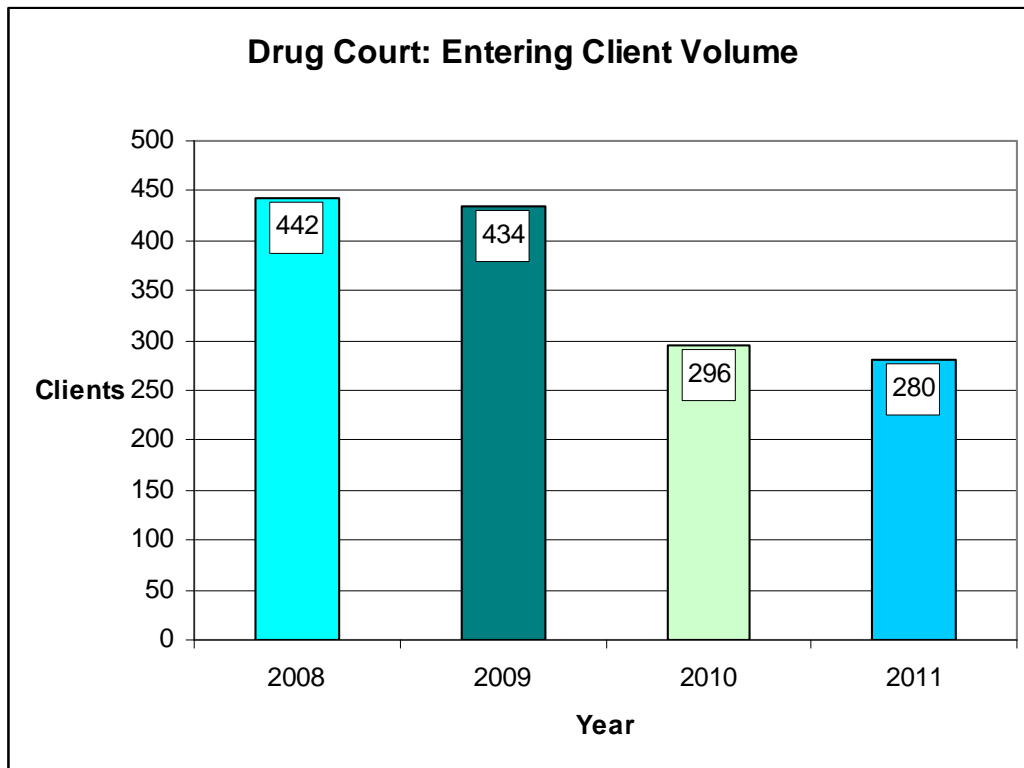
SAN FRANCISCO COLLABORATIVE COURTS

SAN FRANCISCO DRUG COURT 2011 ANNUAL REPORT

I. Client Volume

280 participants entered Drug Court in 2011. Average entering client volume in 2010 and 2011 was 34 percent lower than the previous two years.¹

Figure 1: Drug Court entering client volume, 2008-2011



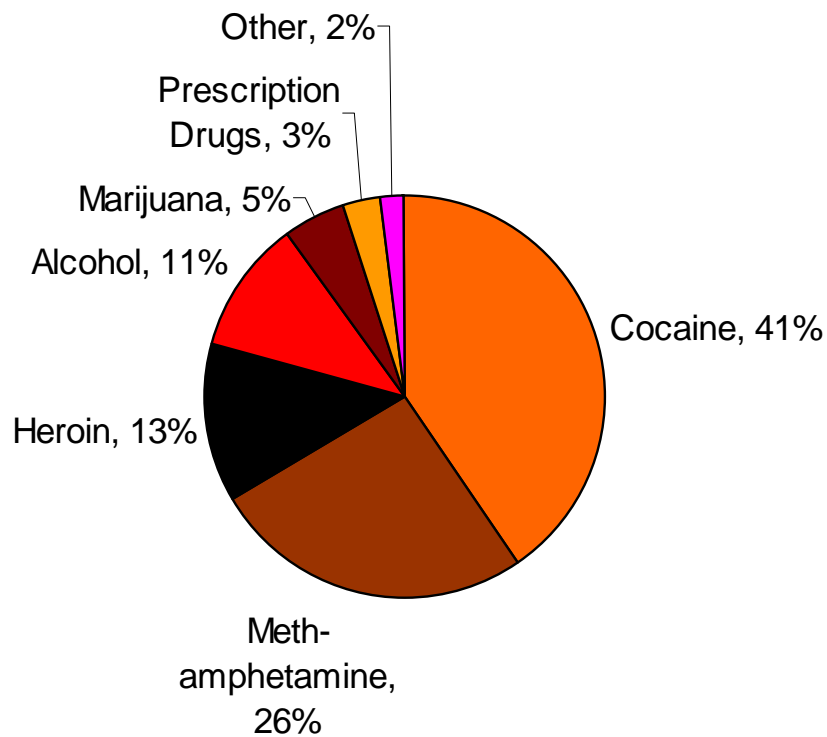
Drug Court served a total of 413 continuing and entering participants in 2011, as compared to 494 in 2010.

¹ Throughout the San Francisco Superior Court, felony case volume is down, especially drug related felonies. In 2009, the monthly average for future scheduled open felony cases was 3,042. Fifty-four percent of those cases were drug-related. In 2011, the monthly average for future scheduled open felony cases was 2,204 – a 27 percent decline--of which 41 percent were drug-related (source: MIR 2133 Reports).

II. Client Characteristics²

- The vast majority of Drug Court clients are male (79%) with no legal source of income.
- The average age at entry is 39.
- Nearly 70 percent of clients have a drug treatment history. Based on the clinical assessment, outpatient treatment was recommended for 51 percent of clients; residential treatment was recommended for 43 percent of clients.³
- Over 30 percent of clients have a co-occurring psychiatric disorder. Fifty-eight percent have a co-occurring medical disorder.
- The majority of clients are daily users (56%) of cocaine, methamphetamine or heroin prior to entering Drug Court.
- Sixty-nine percent of Drug Court clients enter on drug charges. The remaining 31 percent of clients have non-drug charges, including burglary, receiving stolen property and vehicle theft.⁴

A. Primary Drug of Choice: 41% of Drug Court clients cite cocaine as their primary drug of choice, followed by methamphetamine (26%), and heroin (13%).

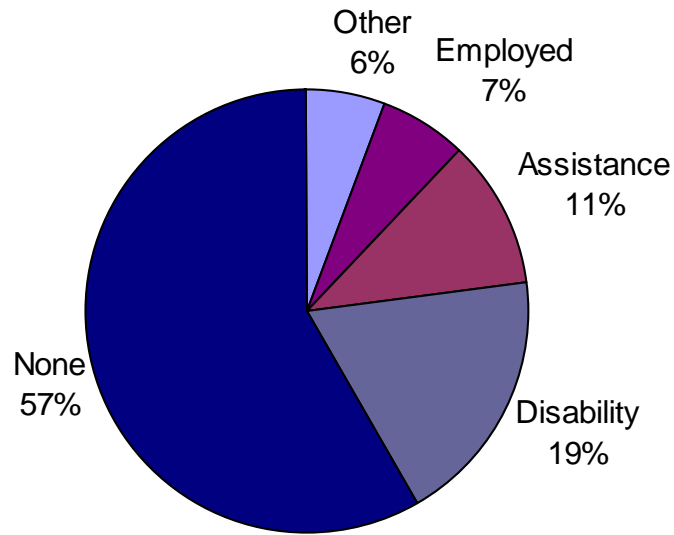


² For a complete list of demographic and diagnostic characteristics, see Appendix A.

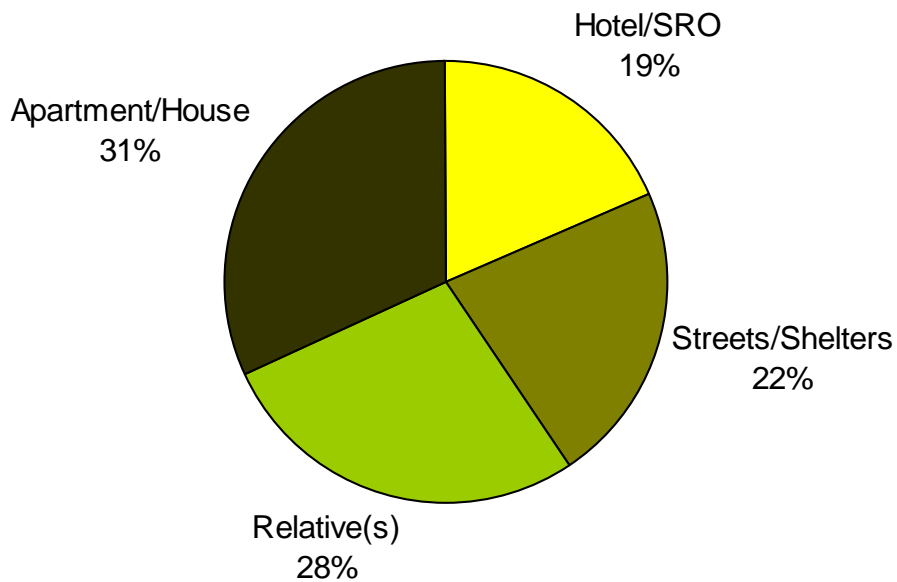
³ Both outpatient and residential treatment reduce recidivism (Research into Practice, 2011. *Effective Substance Abuse Treatment* (presentation). National Center for State Courts, <http://research2practice.org/projects/treatment/index.html>).

⁴ Drug courts that accept defendants with non-drug charges are more cost-effective. (Marlowe, D., 2011. *Best Practices in Drug Courts* (presentation), <http://ctrecoveryconference.com/wp-content/uploads/2011/09/Retooling.ABBREV.CT-Marlowe.pdf>)

B. Income Source: 57% of Drug Court clients have no legal source of income at program entry. Only 7% are employed.



C. Living Situation: 22% of Drug Court clients are homeless at program entry. An additional 19% live in hotels or SROs.



III. Client Characteristics at Graduation

Through their participation in Drug Court, many clients get their lives back on track. Exit data is collected on all Drug Court graduates. In 2011, graduates experienced a 100 percent decrease in the rate of homelessness, and a 277 percent increase in rate of employment.

Table 1: Graduate characteristics that have changed through Drug Court participation (n=71 graduates, exiting in 2011)

DYNAMIC CHARACTERISTICS		Percent at Entry	<u>Percent at Exit</u>
Living Situation	<i>Apartment/House</i>	34%	59%
	<i>Streets/Shelters</i>	25%	-
	<i>Relative(s)</i>	17%	17%
	<i>Hotel/SRO</i>	22.5%	17%
	<i>Other</i>	1.5%	7% (<i>Res. Tx</i>)
Income	<i>None</i>	53%	4%
	<i>Disability</i>	18%	14%
	<i>Employed</i>	13%	49%
	<i>Assistance</i>	6%	26%
	<i>Other</i>	10%	7%
Enrolled in School or Vocational Training at Graduation			25%

IV. Case Processing Time

The median time between arrest and Drug Court entry is 39 days.⁵ The median time between program entry and clinical assessment is 9 calendar days.



V. Time in Drug Court/ Time to Graduation

(Clients exiting in 2011)

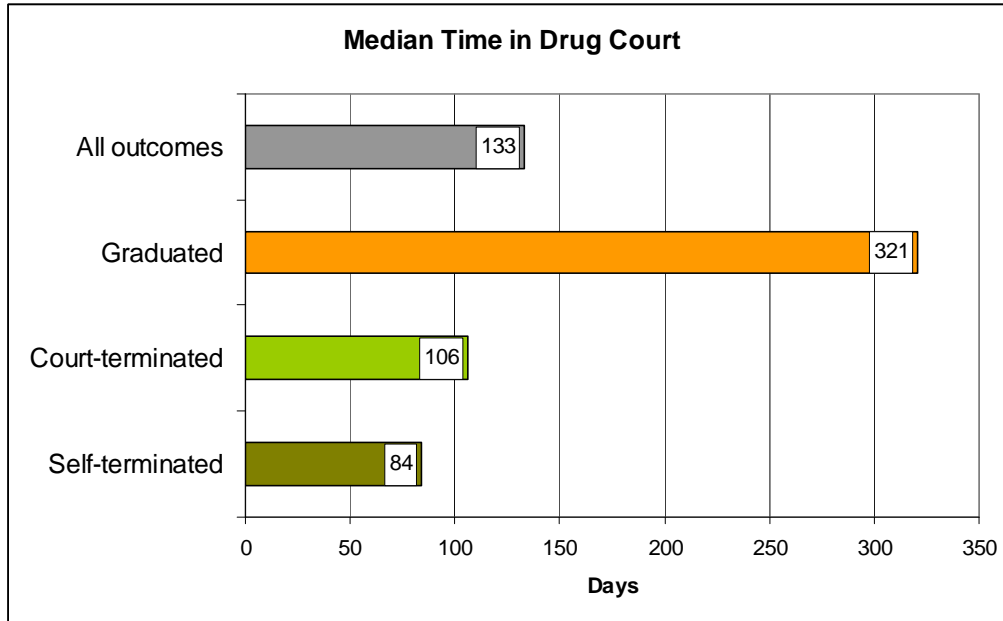
- Among all Drug Court clients, the median time in Drug Court (“program time”) was 4.4 months (median: 133 days; mean: 184 days; range: 7 to 925 days). That is, fifty percent of clients exited Drug Court within 4.4 months.
- The median time to graduation was roughly 10 months (median: 321 days; mean: 349 days; range: 180 to 895 days).⁶

⁵ Research suggests that drug courts that admit appropriate defendants within 20 days of arrest are more cost effective (Marlowe, D. 2011).

⁶ Research indicates that Drug Courts of 12 to 18 months are most effective (Research into Practice, 2011).

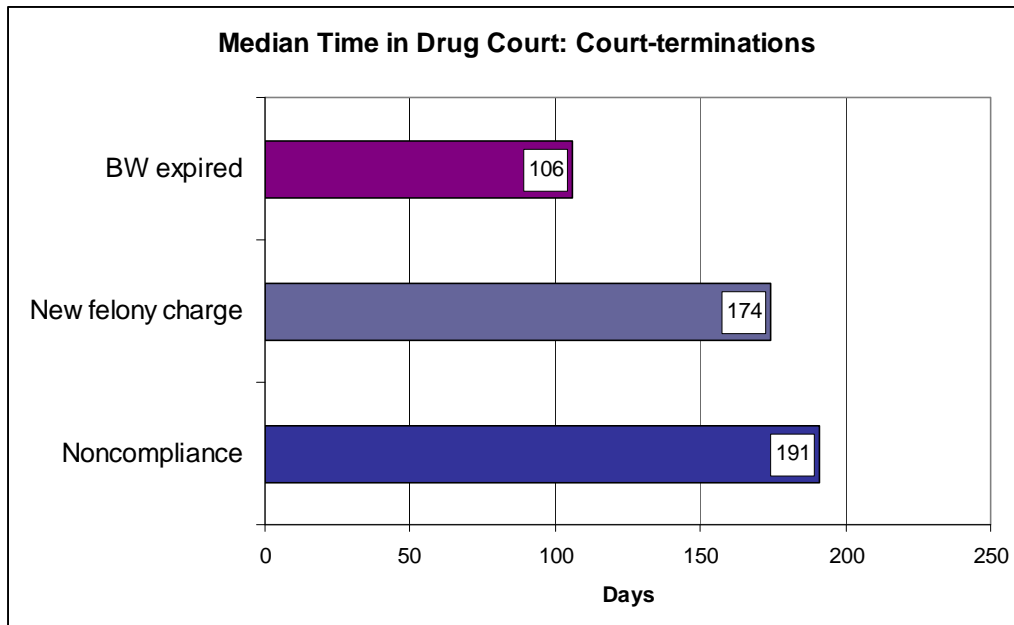
- The median program time for clients who were terminated from Drug Court (“court-terminated”) was roughly three and a half months (median: 106 days; mean: 150 days; range: 7 to 925 days).
- For those who self-terminated from Drug Court, the median program time was nearly 3 months (median: 84 days; mean: 116 days; range 7 to 525 days).

Figure 2: Median days in Drug Court, clients exiting in 2011



There are several reasons that clients are terminated by the Court: Bench Warrant Expired (client has been AWOL for 30 days); New Felony Charge (client has been charged with a new felony); and, Noncompliance (client has been noncompliant with Drug Court requirements).

Figure 3: Median days in Drug Court, court-terminations, by category, 2011



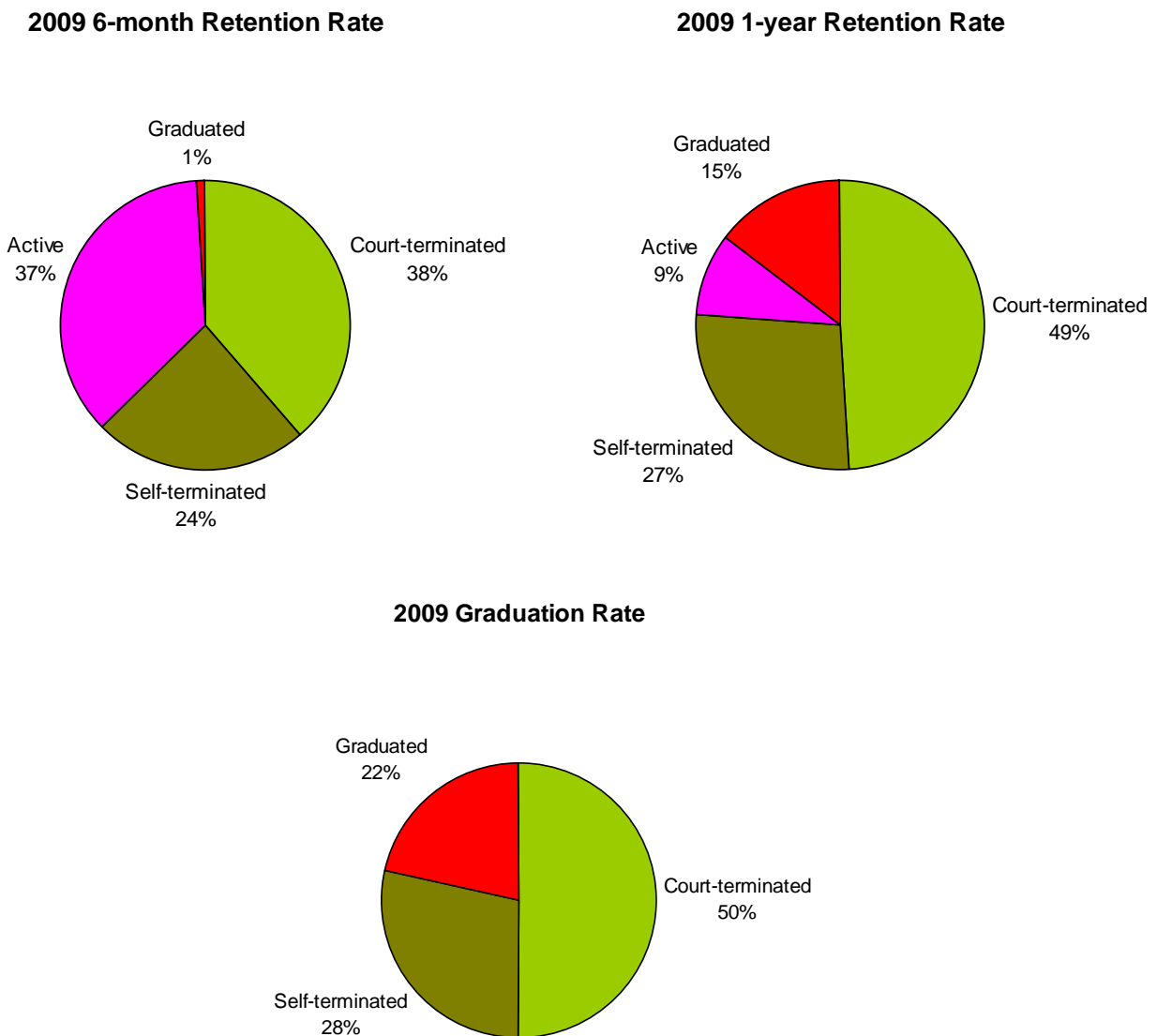
VI. Graduation & Retention

2009 is the most recent year for which a Drug Court graduation rate is available: 22 percent of clients entering in 2009 graduated from Drug Court.⁷

Retention is also an important performance measure:

- 56 percent of 2009 clients had either graduated (1 client) or were active at the 90 day mark (90-day retention rate: 56%). Conversely, 44 percent of client had terminated.
- Within six months of program entry, 62 percent of clients had terminated; 38 percent remained active or had graduated (6-month retention rate: 38%).
- San Francisco's one year retention rate is 24 percent: within one year of program entry 24 percent of clients remained active or had graduated from Drug Court (76 percent had terminated).

Figure 4: 2009 6-month (38%) and 1-year (24%) Retention Rates, and Graduation Rate (22%)



⁷ SF Drug Court graduation rates over time: 2006-24%; 2007-24%; 2008-26%.

Appendix A: 2011 Drug Court Client Characteristics at Program Entry

Characteristic		2010	2011
Gender	Male	77%	79%
	Female	21%	21%
	Transgender	1%	-
Ethnicity	African American	42%	52%
	White	30%	23.5%
	Latino	13%	12%
	Asian/Pacific Islander	7%	6%
	Other	7%	5.5%
	Native American	1%	1%
Age	<i>average</i>	38	39
	<i>range</i>	18 to 70	19-66
Sexual Orientation	Heterosexual	92%	93%
	Lesbian/Gay/Bisexual	8%	7%
Pregnant (at Intake)	<i>count</i>	1 woman	-
Living Situation	Apartment/House	34%	31%
	Streets/Shelters	25%	22%
	Relative(s)	23%	28%
	Hotel/SRO	17%	19%
	Other	1%	-
Income	None	66%	57%
	Disability	16%	19%
	Employed	6%	7%
	Assistance	5%	11%
	Other	6%	6%
Education	High School Diploma	28%	27%
	Some High School	23%	28%
	GED	21%	20%
	Higher Education	18%	15%
	Middle School	7%	5%
	Other/Unknown	3%	4%
Married/Significant Other		16%	12%
#Minor Children	<i>average</i>	0	1
	<i>range</i>	0 to 7	0 to 6
Veteran		9%	6%
Probationer	<i>(MTR entry)</i>	18%	22%
Parolee		15%	13%
Incarcerated at Program Entry		70%	65%

Characteristic		2010	2011
Primary Drug of Choice	Cocaine	39%	41%
	Heroin	16%	13%
	Methamphetamine	29%	26%
	Marijuana/Hashish	4%	5%
	Alcohol	8%	11%
	Prescription Drugs	3%	3%
	Other	1%	2%
Frequency of Drug Use	Daily	44%	56%
	3-6 Times Per Week	21%	27%
	No Past Month Use	17%	8.4%
	1-2 times Per Week	10%	5%
	Monthly	8%	3%
Route of Administration (consumption method)	Smoking	51%	62%
	Injection	10%	17%
	Inhalant	9%	9%
	Oral	30%	13%
Age at Onset of Drug Use	<i>average</i>	22	22
	<i>range</i>	5-59	2-53
Psychiatric Disorder	<i>(self-reported)</i>	37%	32%
Medical Disorder	<i>(self-reported)</i>	56%	58%
Drug Treatment History	<i>(self-reported)</i>	70%	68%
HIV Positive	<i>(self-reported)</i>	5%	6.5%
Hepatitis C	<i>(self-reported)</i>	18%	19%
ASI Scores			
Medical	<i>median</i>	2	1
Employment	<i>median</i>	3	3
Alcohol	<i>median</i>	1	1
Drug	<i>median</i>	5	5
Legal	<i>median</i>	5	5
Family	<i>median</i>	3	3
Treatment Modality Recommendation	Outpatient	51%	51%
	Residential	45%	43%
	Other	4%	6%
Charges	11352 HS	-	35%
	459 PC	-	19%
	11351 HS	-	9%
	11350 HS	-	7%
	11378 HS	-	6%
	11377 HS	-	5%
	496 PC	-	4%
	Other Drug	-	7%
	Other Non-Drug	-	7%